

# COVID-19 Risk Reporting Document Form

*Confidential*

Risk is defined as “the possibility of loss or injury” (HIROC, 2017).

Completed by: \_\_\_\_\_

Department: \_\_\_\_\_

Date: \_\_\_\_\_

<b>Brief description of risk</b>	
----------------------------------	--

Impact Scale					
Domain	Very Low	Low	Moderate	High	Very High
Descriptors	No significant risk of harm	Potential for minor harm	Potential for harm (disabling but not permanent)	Likely to result in severe harm (permanent disability)	Likely to result in death(s)

Likelihood Scale					
Domain	Very Low	Low	Moderate	High	Very High
Descriptors	Will probably never occur/recur	Do not expect it to happen/recur but it is possible	Might happen or recur occasionally	Will probably happen/recur	Will undoubtedly happen/recur, possible frequently

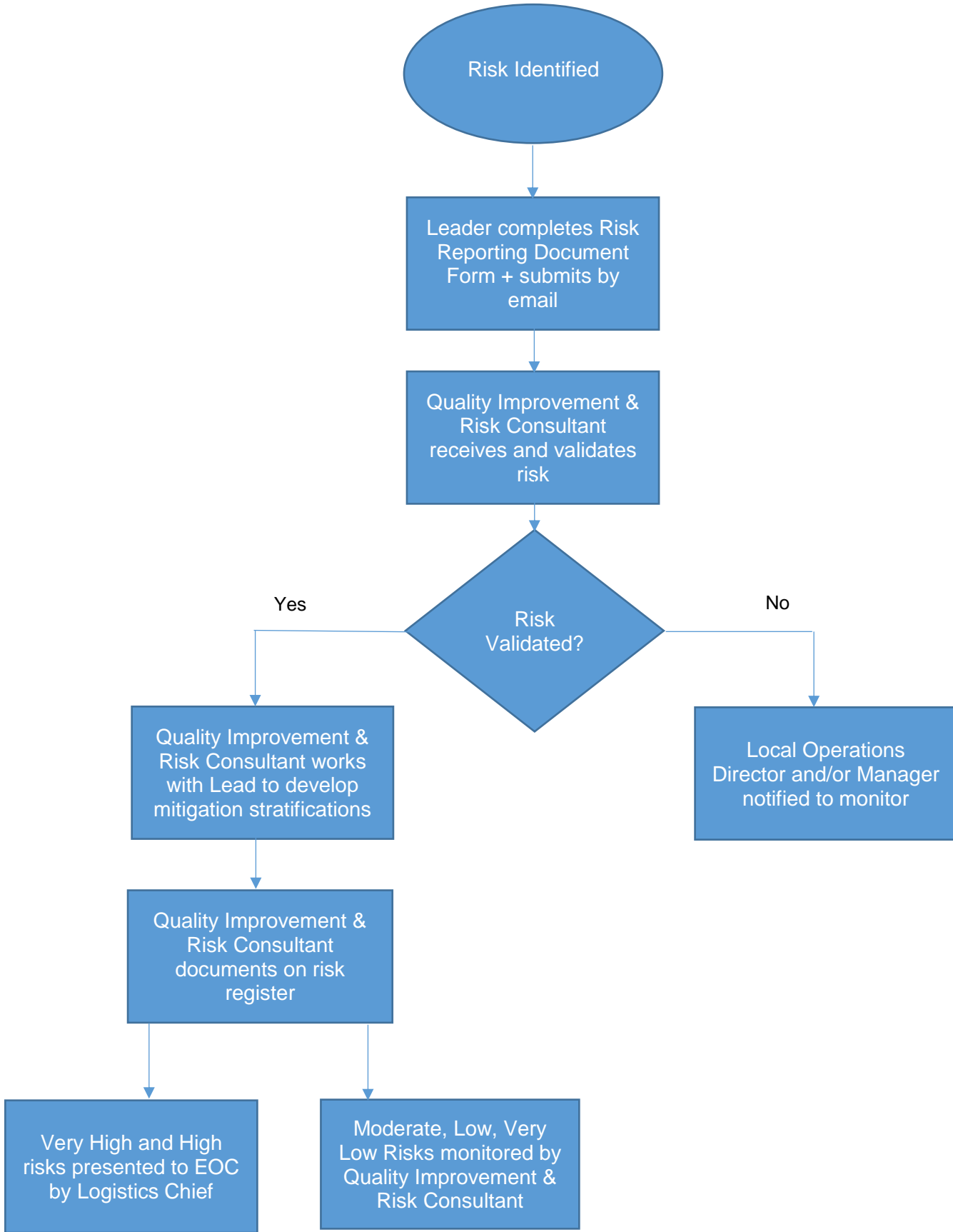
<b>Date risk was identified</b>					
<b>Type of Risk</b>	Type of Risk		Impact <i>(see above)</i>	Likelihood <i>(see above)</i>	
	<input type="checkbox"/> Patient Safety				
	<input type="checkbox"/> Team RVH Workforce				
	<input type="checkbox"/> Occupational Health and Safety				
	<input type="checkbox"/> Supplies				
	<input type="checkbox"/> Public Relations				
	<input type="checkbox"/> Security				
	<input type="checkbox"/> Operations				
	<input type="checkbox"/> Other				

<b>Preventative/ Mitigating Strategies</b>	
--	--

Please submit completed forms to Quality Improvement and Risk Consultant.

# COVID-19 Risk Reporting Document Form

*Confidential*



## Risk Assessment and Risk Register

*(to be filled out by Quality Improvement and Risk Consultant)*

Risk #	Risk	Type of Risk	EOC Lead	Most Responsible Department	Most Responsible Person	Impact/Severity	Likelihood/Frequency	Total Risk Score	Severity	Mitigation Strategy	Risk Status	Presented to EOC	Last Updated	Comments
Risk #1	Give a high level description of what the risk is (risk + consequence of the risk)	Patient Safety				4	3	12	High	Clear set out preventative and mitigating strategies. Define those that are currently in place and those that need to be implemented	Open	Yes		

**Risk Heat Map**

