



CorHealth COVID-19 Cardiac Stakeholder Forum Meeting #4

April 9, 2020 - 8:00-9:00 am

Teleconference: (647) 951-8467 or Long Distance: 1 (844) 304 -7743

Conference ID: 986393473

Agenda

Description	Presenter	Time
1. Welcome <ul style="list-style-type: none">Meeting Objective	Sheila Jarvis	08:00
2. CorHealth COVID-19 Cardiac Memo #7-Immediate Reduction in Cardiac Procedures & Surgeries (April 4, 2020) <ul style="list-style-type: none">Key Messages	Dr. Madhu Natarajan	08:05
3. Cardiac submodule of the CORE (COVID-19 Resource Estimator) model <ul style="list-style-type: none">COVID-19 resource predictionsConsequences of outpatient restrictions for AS and CAD	Dr. Harindra Wijeysondera	08:10
4. Facilitated Discussion	Dr. Madhu Natarajan	08:40
5. Other Updates and Next Steps	Jana Jeffrey	08:55



Welcome

SHEILA JARVIS

Meeting Objectives

- To provide:
 - Background information on the CorHealth COVID-19 Cardiac Memo #7;
 - An overview of the Cardiac submodule of the CORE (COvid-19 Resource Estimator) model; and
 - Up to date cardiac reporting data to support COVID-19 planning.
- To discuss feedback from the cardiac community regarding Memo #7



CorHealth COVID-19 Cardiac Memo #7- Immediate Reduction in Cardiac Procedures & Surgeries

DR. MADHU NATARAJAN

Key Messages

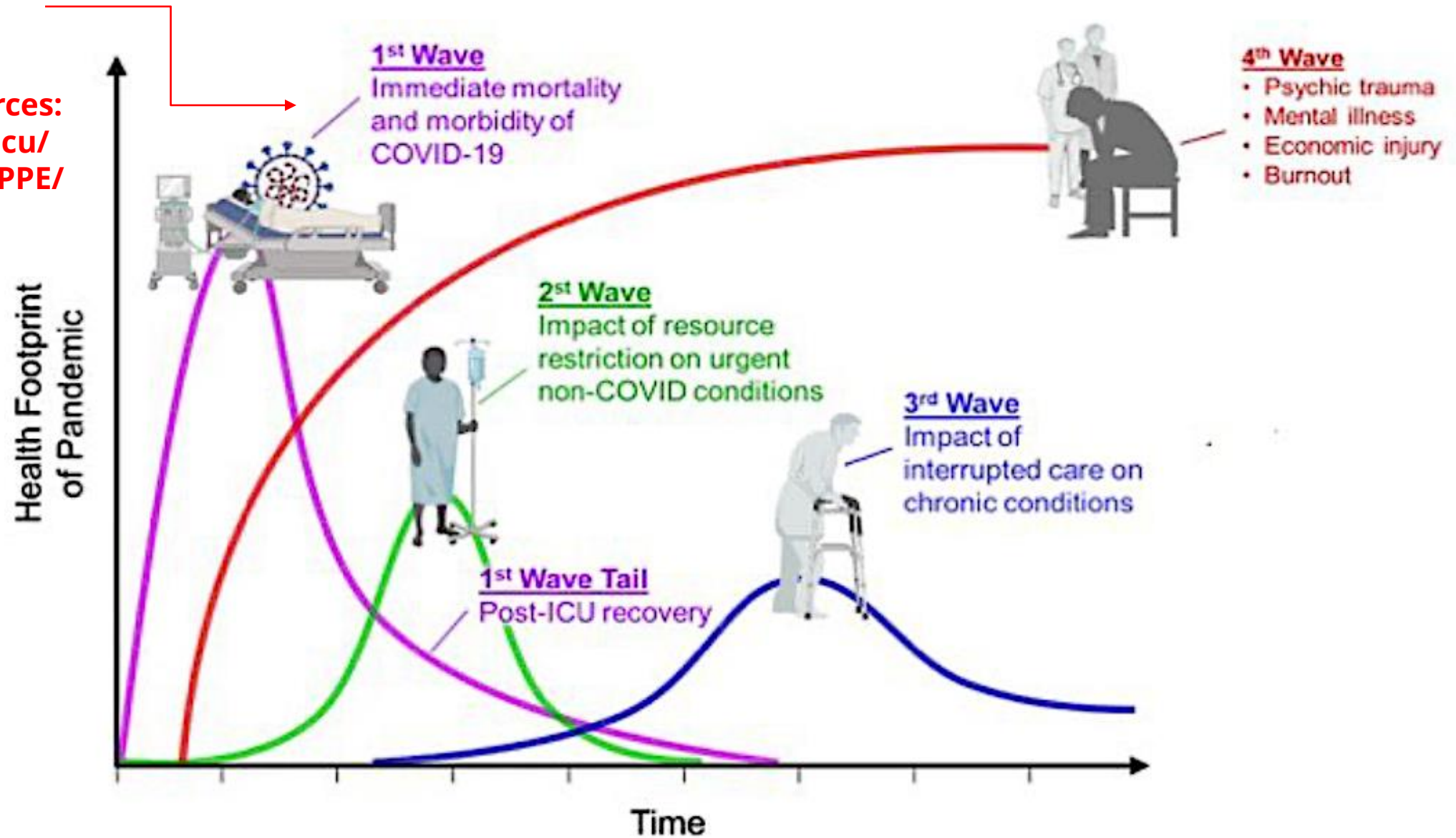
- March 15: MOH memo to OH and Hospitals “Ramping Down Elective Surgeries and Other Non-Emergent Activities”
- April 2: CorHealth COVID-19 Cardiac Forum; projected need for ICU resources to manage COVID-19 in the coming weeks
- April 3: Province releases COVID-19 case and hospital use forecasts reinforcing the need to conserve hospital resources
- Available data and tools were used to inform current state and projection (i.e. CorHealth Cardiac Registry; Cardiac Sub-Module of CORE model)
- April 4: Memo #7 was released reinforcing the critical need preserve hospital resources while allowing local clinical teams flexibility for prioritizing their patients.



Cardiac submodule of the CORE (COvid-19 Resource Estimator) model

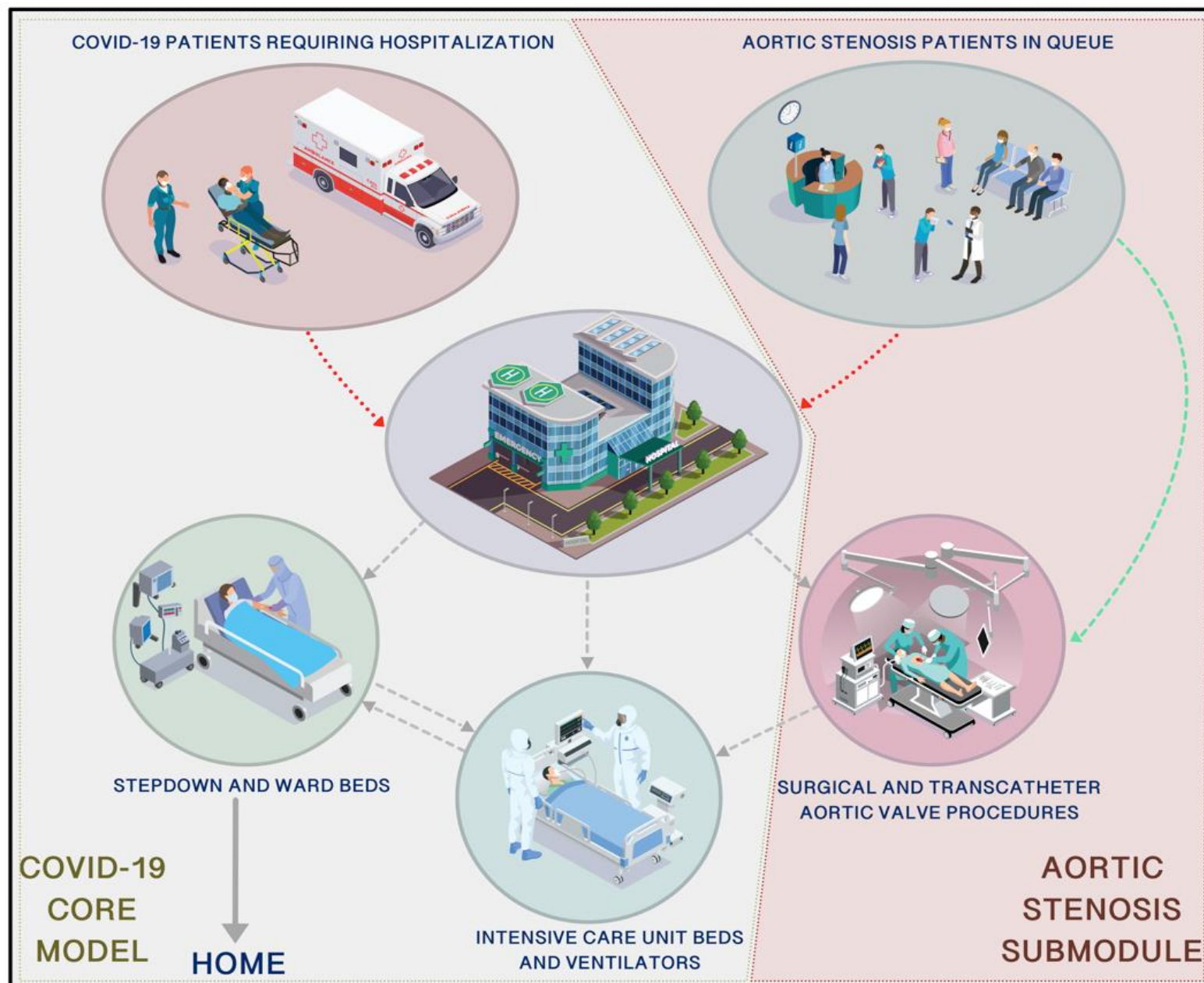
DR. HARINDRA WIJEYSUNDERA

Public health Resources: Ward/icu/ vents/PPE/ HCW

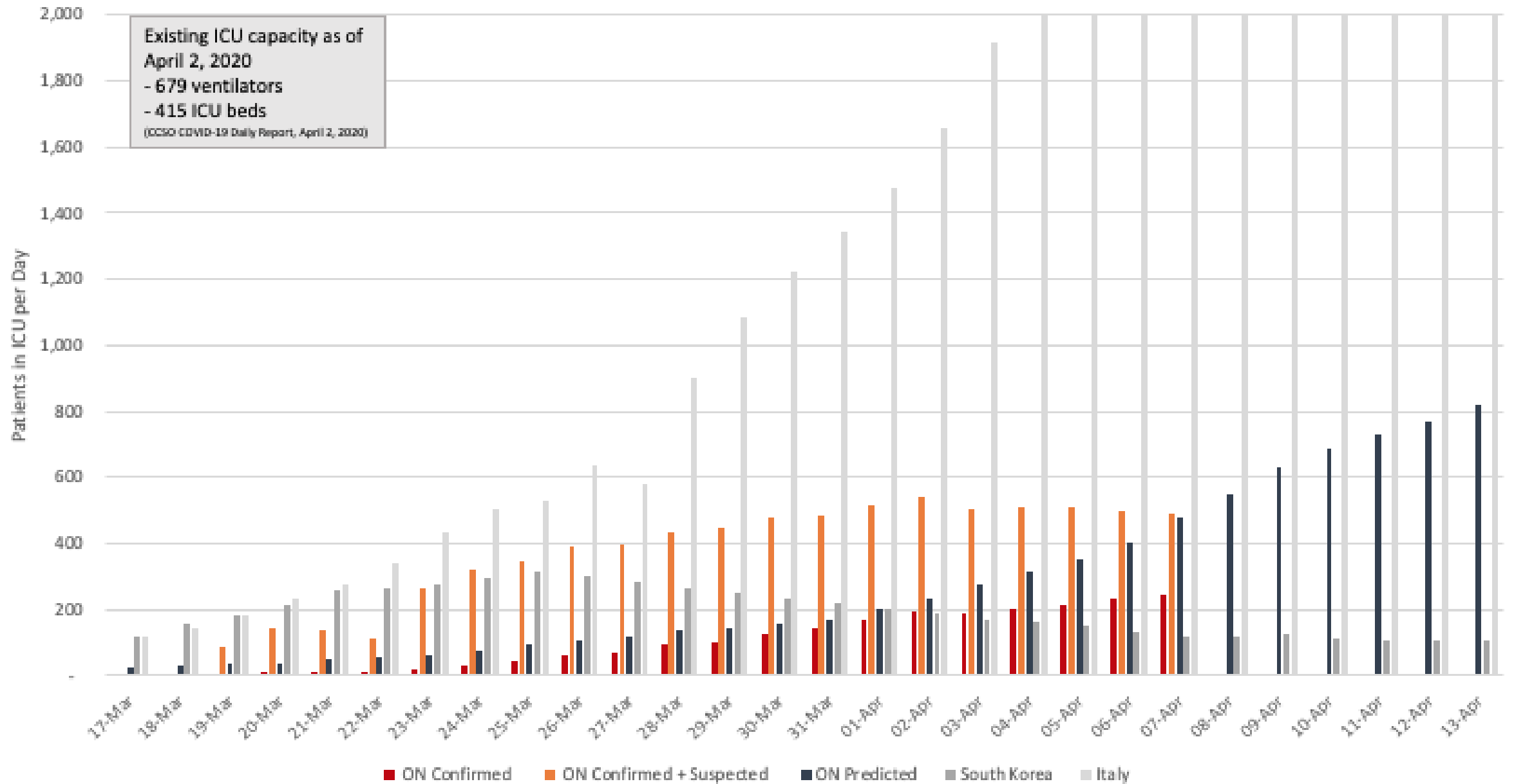


COvid Resource Estimator (CORE), cardiac submodule

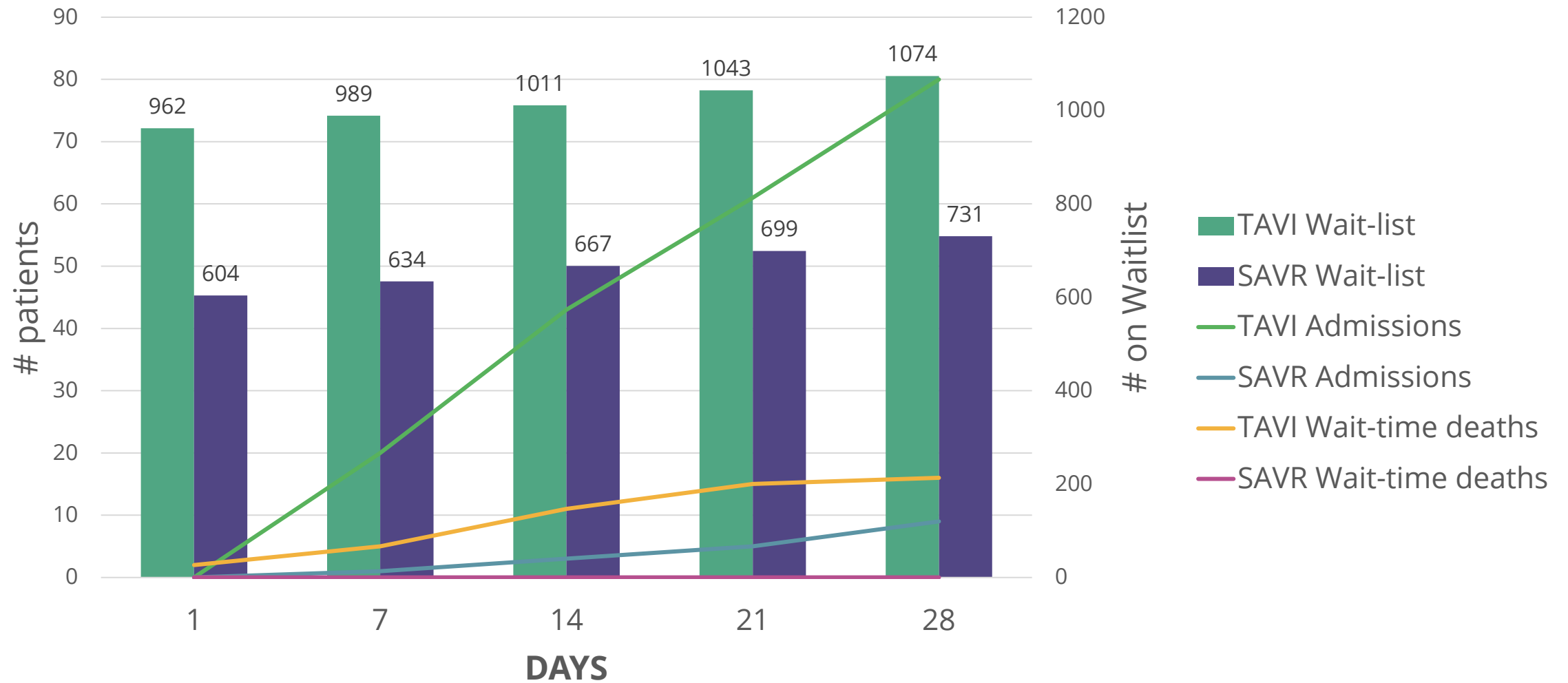
- CORE model uses observed and predicted epidemic trajectories to estimate future case numbers, and critical healthcare resources needs (ICU/ward/vents/PPE).
- Cardiac submodule:
 - Consequences of delays
 - Resources implications of competing with COVID patients from global pool



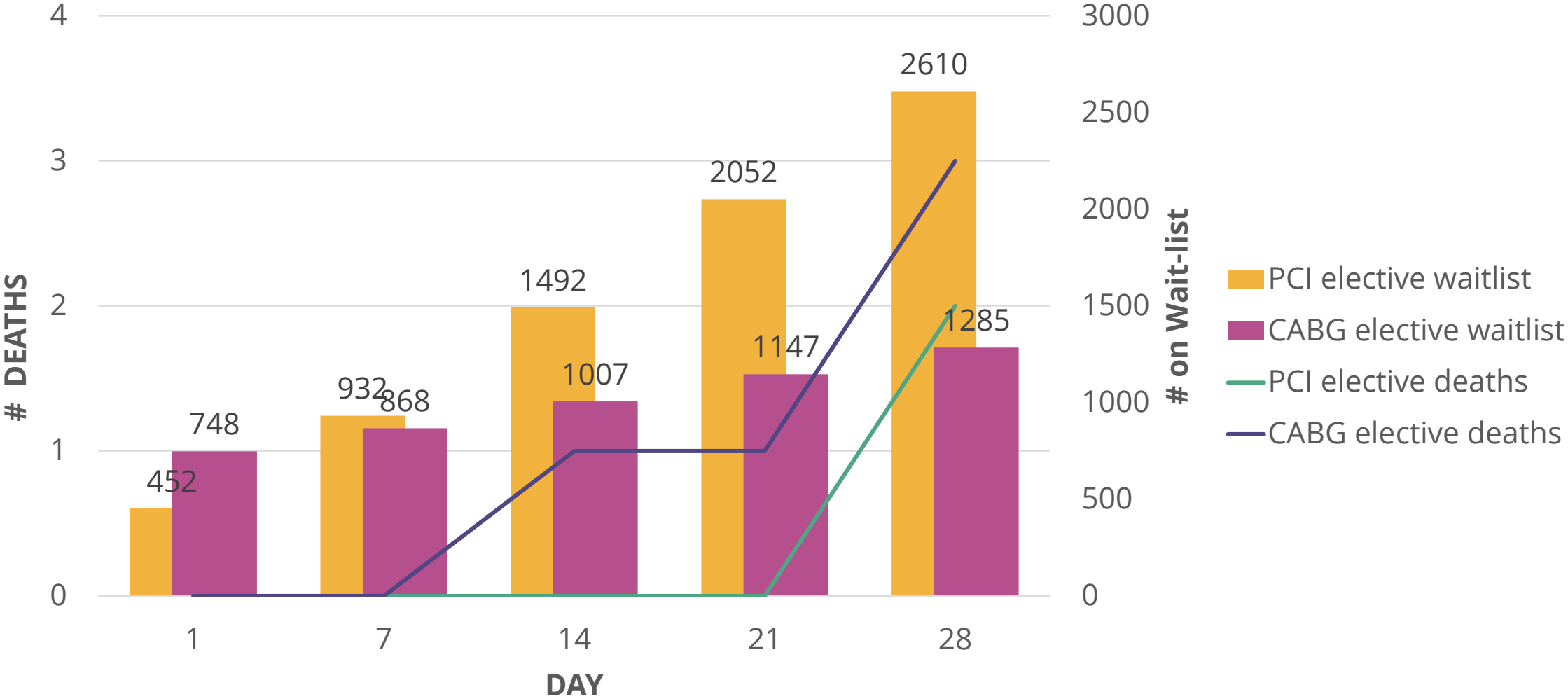
Patients in ICU per Day (predicted vs. observed)



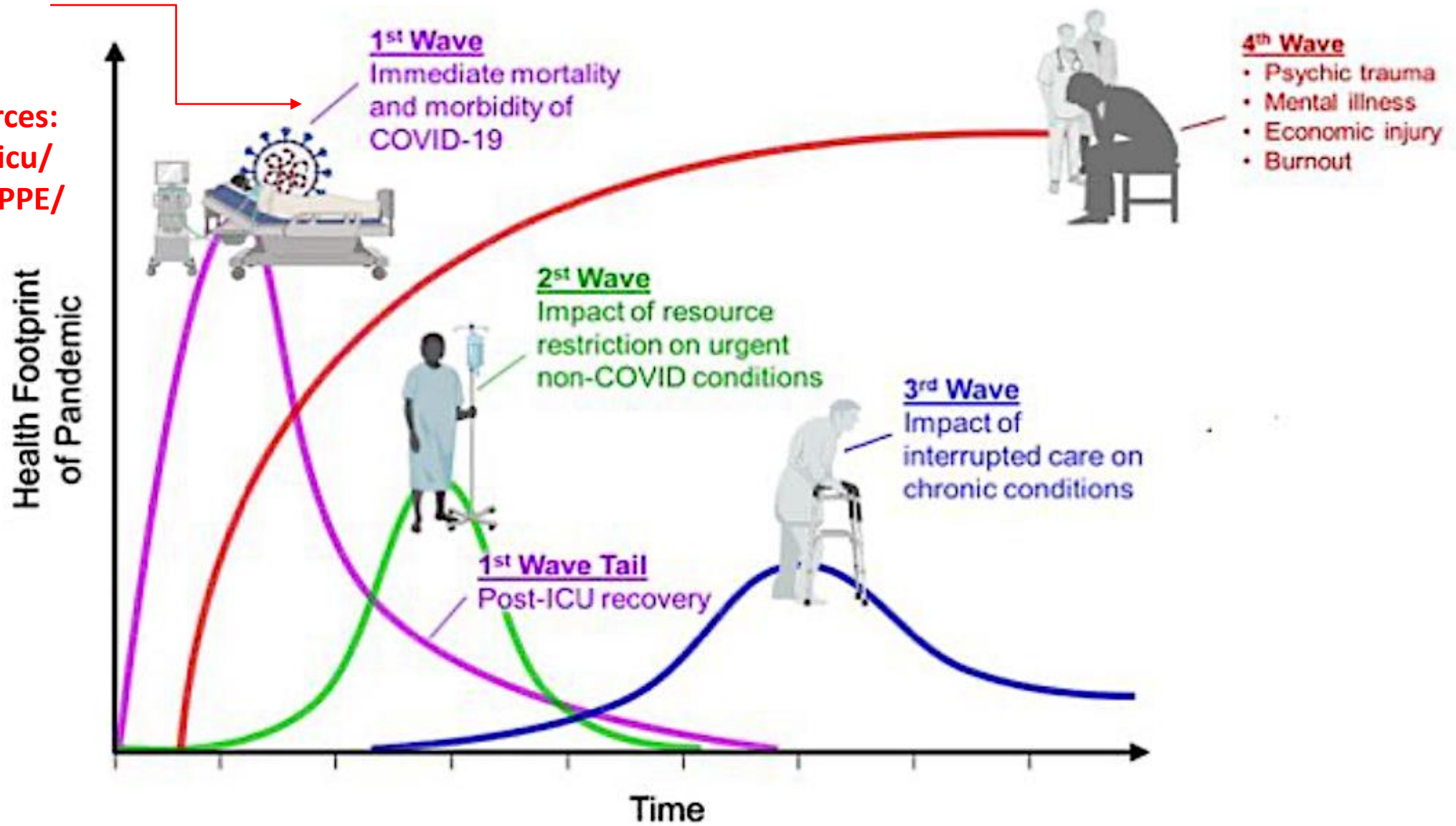
Scenario: No Outpatient TAVI/SAVR



Scenario: No outpatient PCI (SS/elective) & CABG



Public health
Resources:
Ward/icu/
vents/PPE/
HCW





Facilitated Discussion

DR. MADHU NATARAJAN

Questions and Concerns Raised Regarding Memo #7

- Management of high-risk outpatients
- Communication regarding ongoing monitoring and model refinement
- Are there any other questions or concerns related to Memo #7?



Next Steps

JANA JEFFREY

Next Steps

- Next COVID-19 Cardiac Forum Meeting: Thursday, April 16, 2020; 8:00-9:00 am
 - Review activity data and modeling
 - Sharing of current status
 - Rehabilitation
 - CCS Triage and Waitlist Management Document
 - Other items?