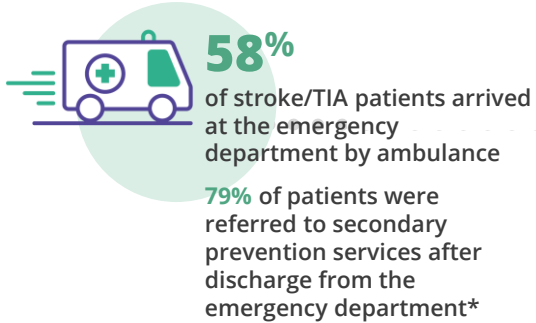


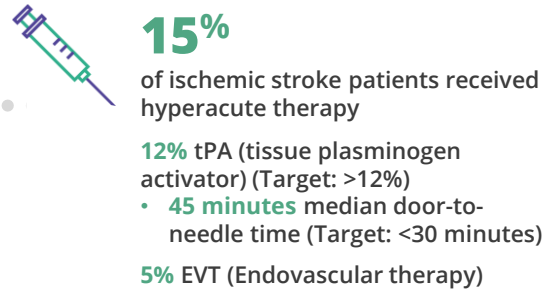
Stroke Care in Ontario 2019/20



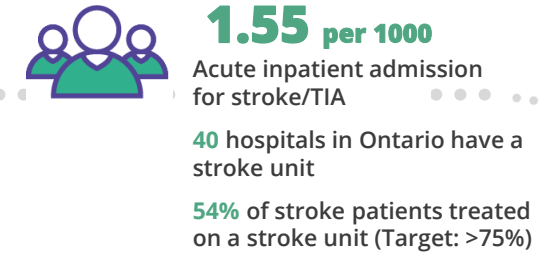
STROKE IS A MEDICAL EMERGENCY



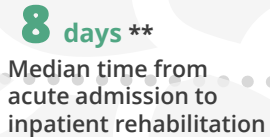
TIME IS BRAIN



STROKE UNIT CARE IMPROVES OUTCOMES



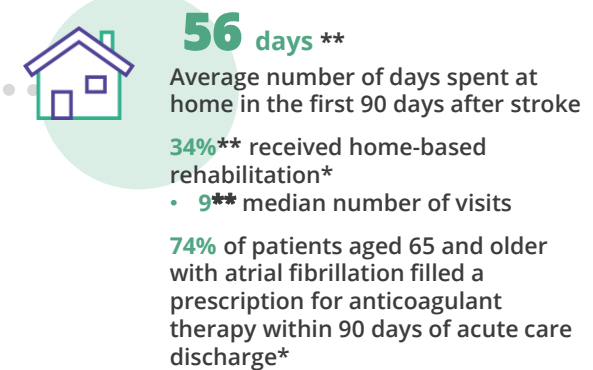
SECONDARY PREVENTION OF STROKE OCCURS ACROSS THE CARE CONTINUUM



REHABILITATION OPTIMIZES RECOVERY



STROKE JOURNEY CONTINUES AFTER DISCHARGE



PATIENT OUTCOMES

- 7% of stroke/TIA patients were readmitted within 30 days
- 12% of stroke/TIA patients died within 30 days
- 9%** of stroke patients were admitted to long-term care within 1-year post discharge

*There is currently no data available for outpatient rehabilitation and secondary prevention clinic.
** 2019/20 Q2 (YTD)

